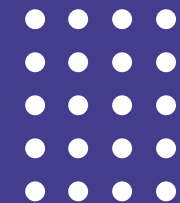


# **GROUP OF COMPANIES PRESENTATION**

**NEW SERVICES TO NEW INFRASTRUCTURE**



# GROUP STRUCTURE

## TRANSPORTATION



- **The largest** private logistics operator
- **> 30 000 TEU per month**
- More than **17 years** on the market



- Sea logistics provider
- **8 vessels** in the fleet
- **General Agents in Asia-Pacific countries**



- Agent of LOGOPER in China
- **2023 – Office opening in Shanghai**

## TERMINAL NETWORK



- **45 hectares**
- **250 000 TEU/year**



- **120 hectares**
- **1 000 000 TEU/year**



- **131 hectares**
- **600 000 TEU/year**



- **158 hectares**
- **1 000 000 TEU/year**



- **417 hectares**
- **1 000 000 TEU/year**

# GROUP ASSETS

## Full range of logistics solutions

### Operating container terminals

TLC Khovrino (Moscow)  
TLC Elektrougli (Moscow region)  
TLC Uralskiy (Yekaterinburg)  
TLC Sibirskiy (Novosibirsk region)

### Container terminals under construction

TLC in Primorsky krai  
TLC in Khabarovsky krai

### Customs representative

LOGICON

### Fleet

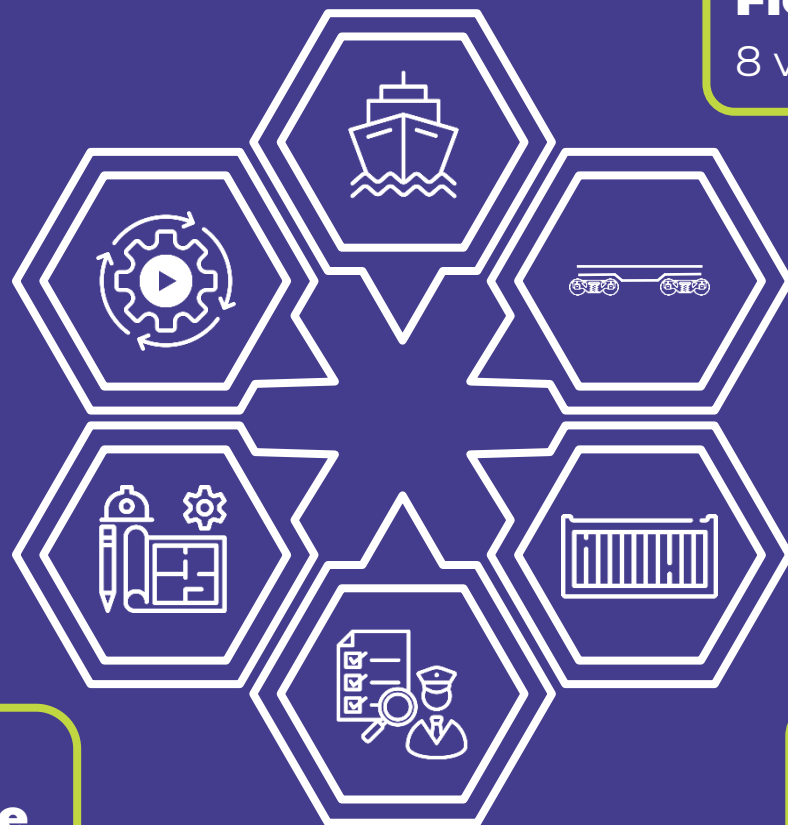
8 vessels

### Rolling stock

> 8 800 platforms

### Container park

99 000 TEU



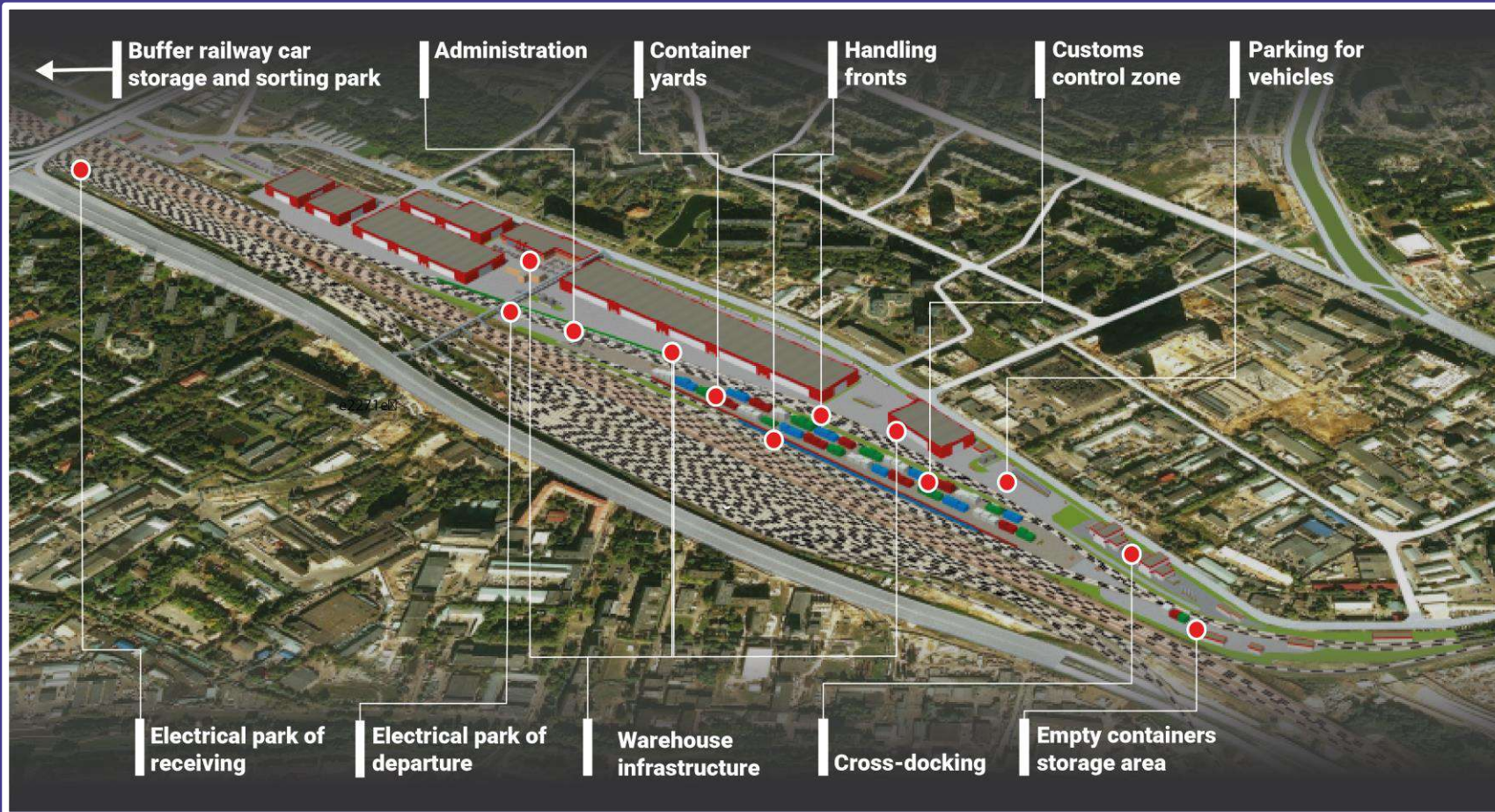
# TERMINAL INFRASTRUCTURE



**11** multimodal transport and logistics centres

**5.65** mln TEU/year  
terminal facilities in regions of operation

# TLC KHOVRINO



## Specifications

<b>250 000</b>	Capacity, TEU/year
<b>3</b>	Quantity of handling fronts 810 m long
<b>45</b>	Area of TLC territory, ha
<b>6</b>	Quantity of railway lines in buffer railway car storage and sorting park
<b>6</b>	Quantity of receiving/departure railway line 1
<b>2014</b>	Start operation
<b>2026</b>	Completion date

# TLC ELEKTROUGLI

## Specifications

**1 000 000** Capacity, TEU/year

**6** Quantity of handling fronts 1050 m long

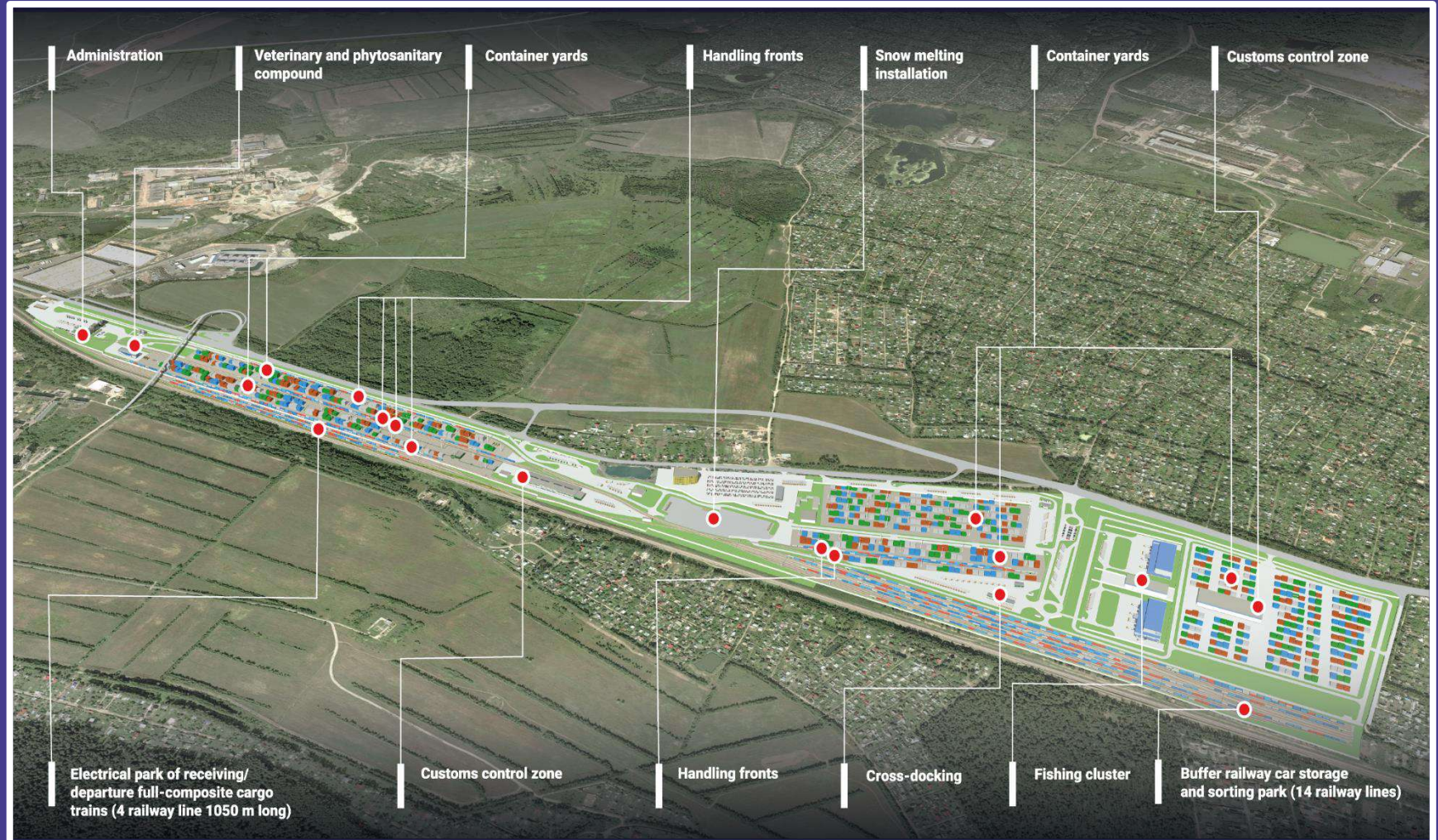
**120** Area of TLC territory, ha

**14** Quantity of railway lines in buffer railway car storage and sorting park

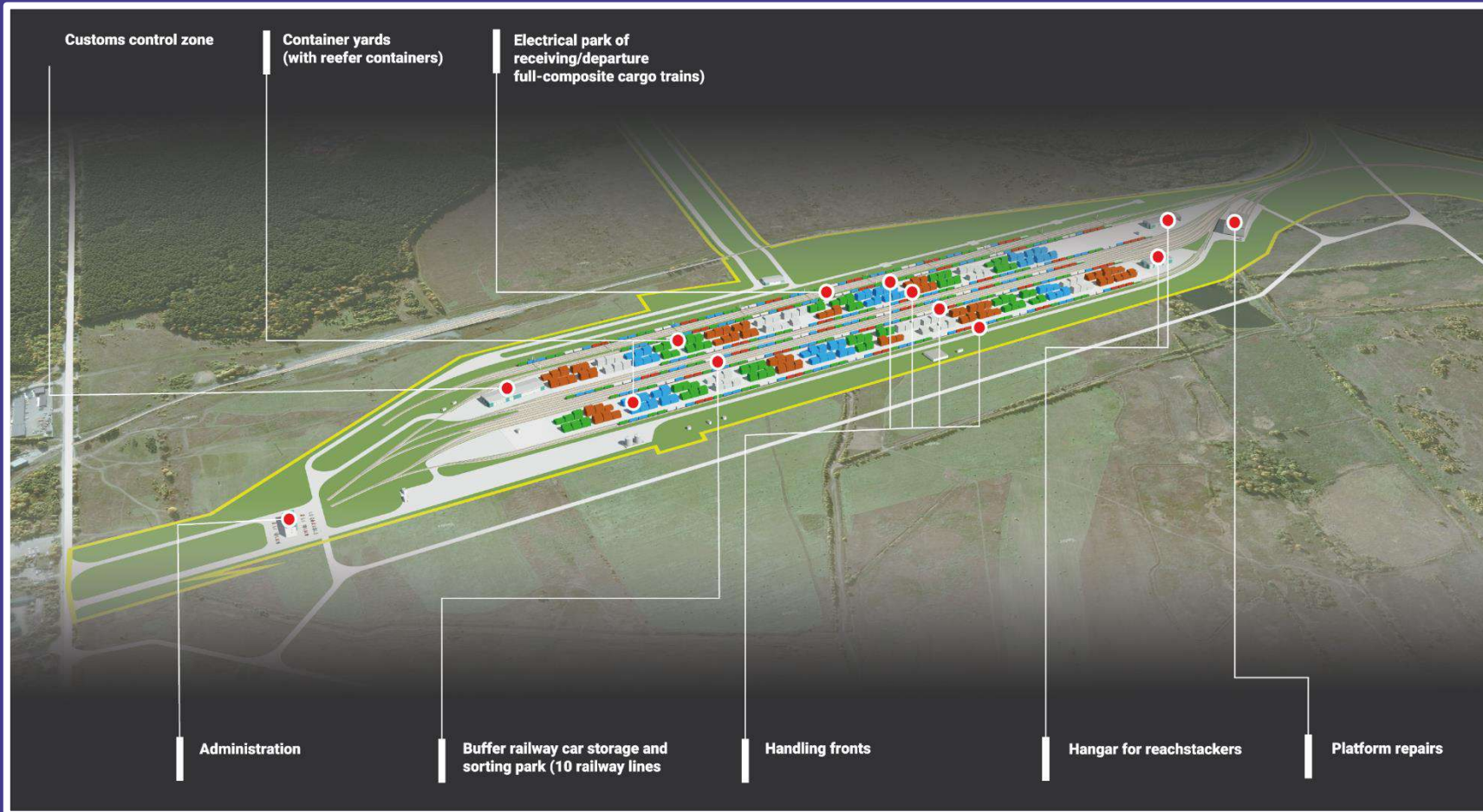
**5** Quantity of receiving/departure railway line 1050 m long

**2018** Start operation

**2023** Completion date



# TLC URALSKIY



## Specifications

<b>600 000</b>	Capacity, TEU/year
<b>4</b>	Quantity of handling fronts 1050 m long
<b>131</b>	Area of TLC territory, ha
<b>10</b>	Quantity of railway lines in buffer railway car storage and sorting park
<b>4</b>	Quantity of receiving/departure railway line 1050 m long
<b>2022</b>	Start operation
<b>2026</b>	Completion date

# TLC SIBIRSKIY

## Specifications

**1 000 000** Capacity, TEU/year

**12** Quantity of handling fronts 1050 m long

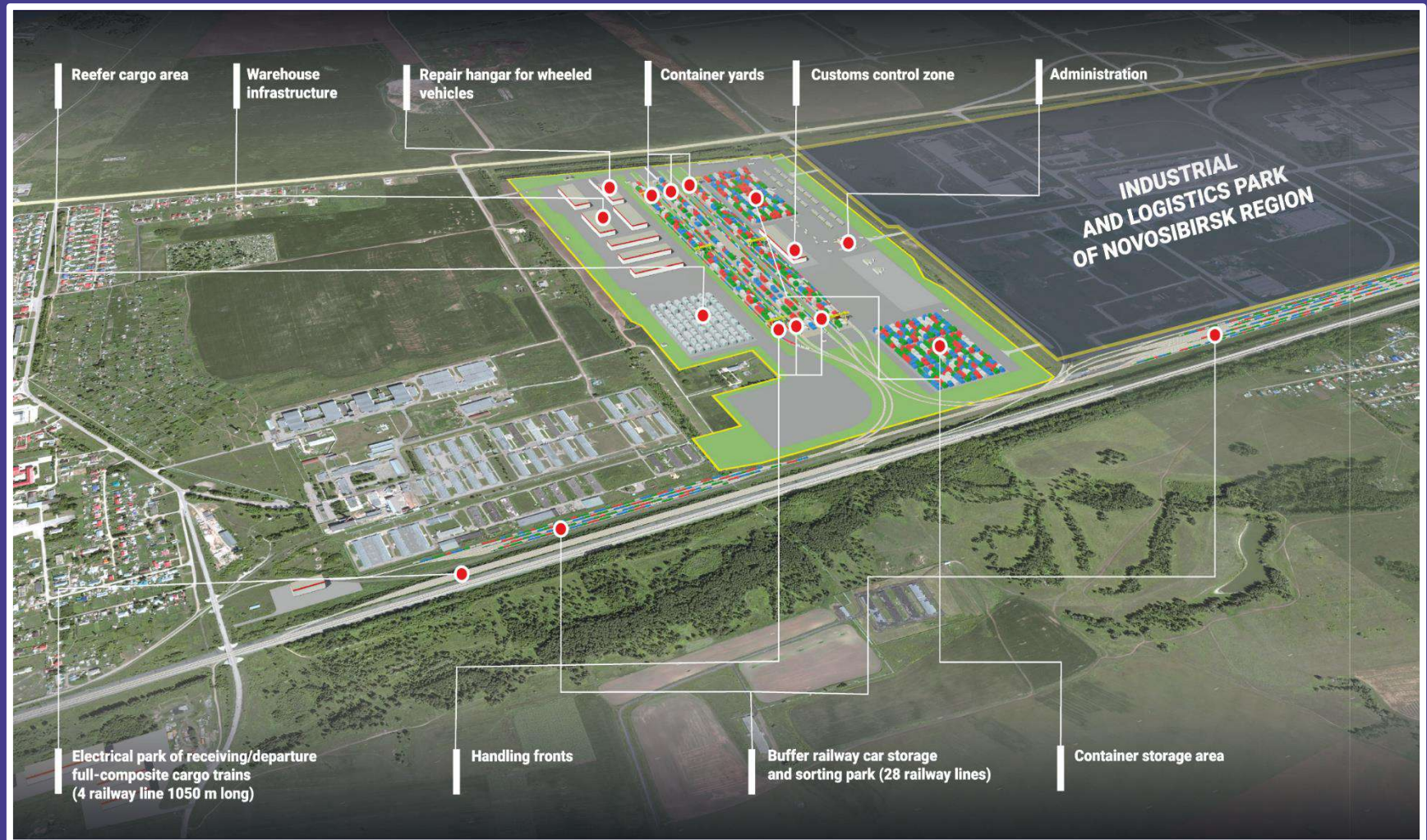
**158** Area of TLC territory, ha

**28** Quantity of railway lines in buffer railway car storage and sorting park

**4** Quantity of receiving/departure railway line 1050 m long

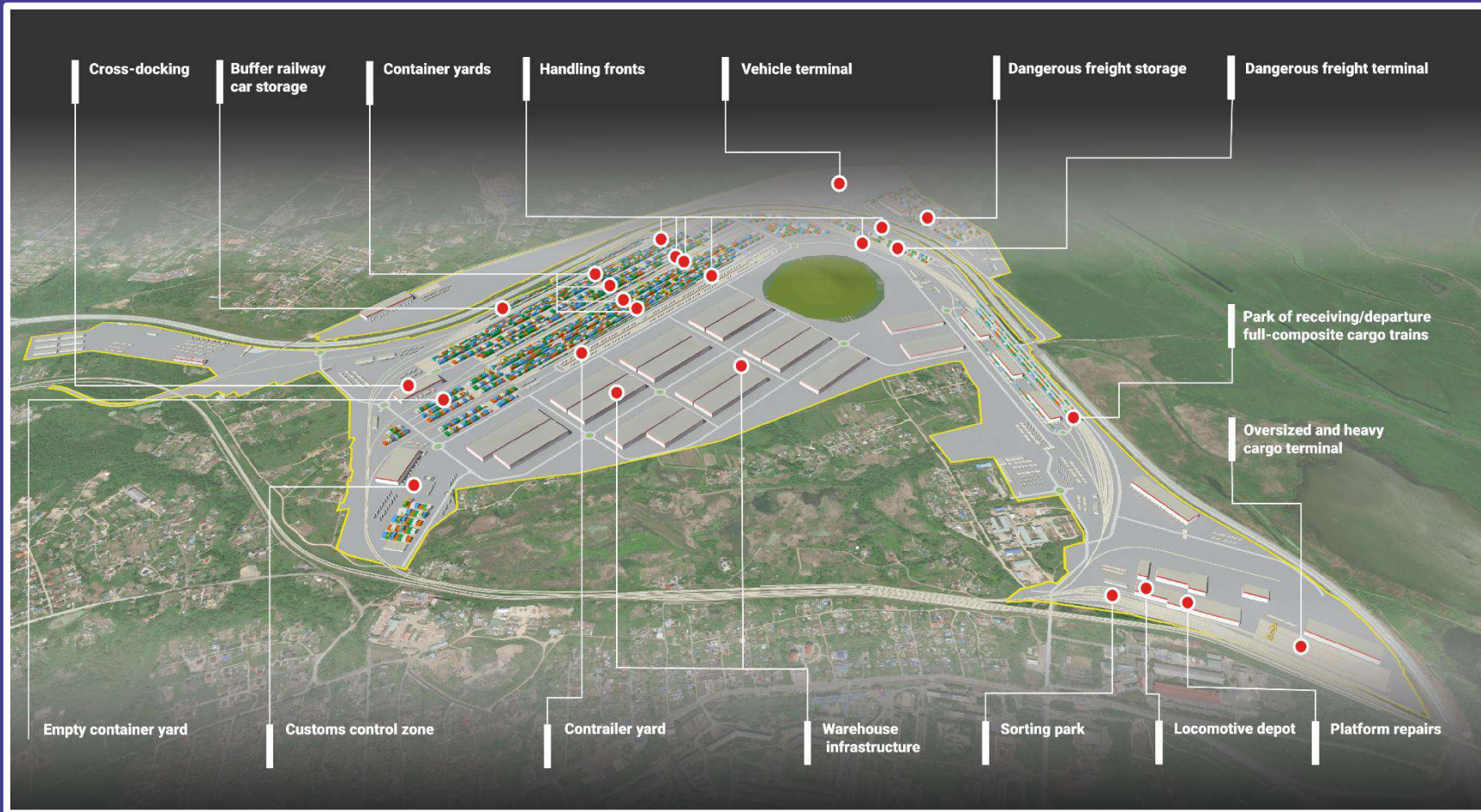
**2023** Start operation

**2026** Completion date





# TLC ARTYOM



## Specifications

<b>1 000 000</b>	Capacity, TEU/year
<b>12</b>	Quantity of handling fronts 1050 m long
<b>455</b>	Area of TLC territory, ha
<b>16</b>	Quantity of railway lines in buffer railway car storage and sorting park
<b>8</b>	Quantity of receiving/departure railway line 1050 m long
<b>2025</b>	Start operation
<b>2027</b>	Completion date

# MAIN ROUTES GEOGRAPHY



Door-to-Door delivery



Predictable transit time of delivery



Additional services (insurance, etc.)



Multimodal transportations in export and import directions



**> 300 000 TEU**  
Cargo throughput in 2023



**3 000 TRAINS**  
Dispatched in 2023



**16 YEARS ON THE MARKET**  
Date of foundation – 2007  
(the previous name «Logistics operator»)



**33,4 BLN RUB**  
Revenue for 2023



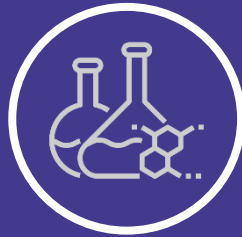
**x 2**  
Revenue growth for the last year



# SOLUTIONS FOR INDUSTRIES



**NON-FOOD  
RETAIL**



**CHEMISTRY  
CARGO**



**HIGH-TECH /  
ELECTRONICS**



**AGRICULTURE**



**AUTOMOTIVE  
(SKD/CCKD/  
FINISHED CARS)**



**TIMBER,  
PULP & PAPER**

# DOMESTIC RAILWAY SERVICES

## REGULAR SCHEDULED BLOCK TRAINS

From Moscow (TLC Elektrougli):

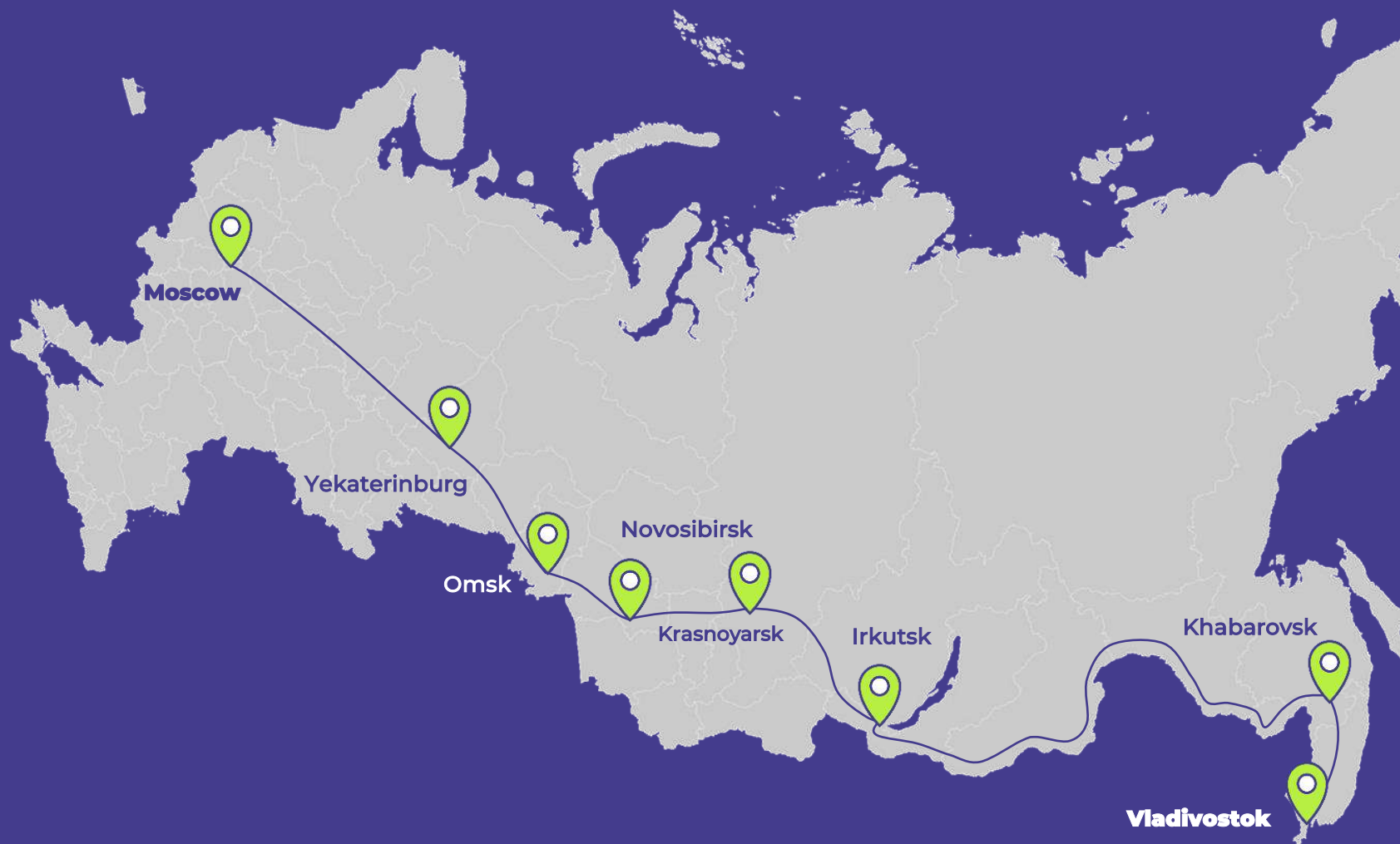
- to Yekaterinburg – 3 trains per week
- to Novosibirsk – 7 trains per week
- to Omsk – 2 trains per week
- to Krasnoyarsk – 4 trains per week
- to Irkutsk – 4 trains per week
- to the Far East – 6 trains per week

More than 26 trains per week

From Vladivostok (Uglovaya station)  
to Yekaterinburg / Moscow – 3 – 5 trains per week

## MARKET SHARES BY DIRECTIONS

- 1st place Moscow – Krasnoyarsk
- 2nd place Moscow – Yekaterinburg
- 2nd place Moscow – Novosibirsk
- 2nd place Moscow – Vladivostok



# EXPORT SERVICES



## OWN CONTAINER TRAINS

### From

- Ural region (Yekaterinburg)
- West Siberian region (Novosibirsk)
- Krasnoyarsk region

### Through

- Far Eastern ports (VMTP, VMPP, Nakhodka-Terminal Astafiev, VSC)
- Land cross-borders (Zabaykalsk, Mongolia, Kazakhstan, Azerbaijan)

## TERMINAL'S SERVICES

- Moscow
- Novosibirsk
- Yekaterinburg
- Vladivostok

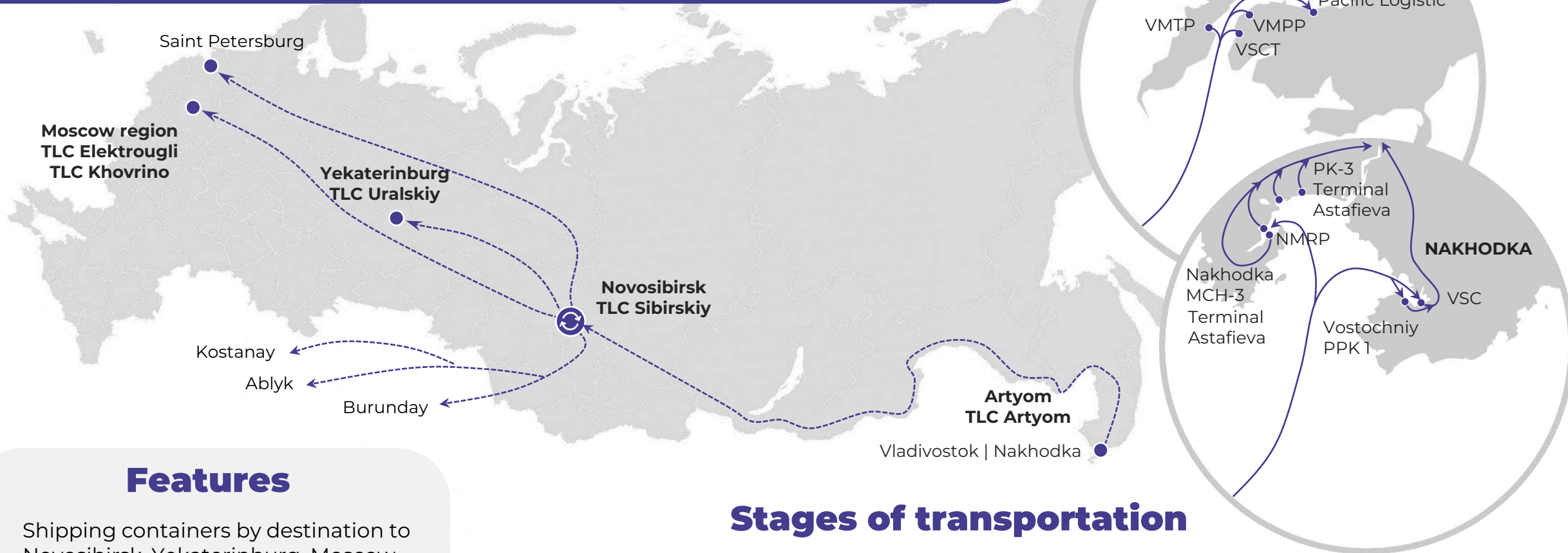
# INTERMODAL IMPORT SERVICES



## INTERMODAL TRANSPORTATIONS

Integrated logistic solutions for cargo delivery from the countries of Southeast Asia through the Far East ports and terminals (VSCT, VMPP, VMTP, Pacific Logistic & etc.) to Russian cities

# IMPORT IN GONDOLA CARS

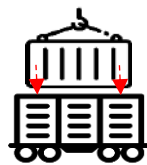


## Features

- Shipping containers by destination to Novosibirsk, Yekaterinburg, Moscow and Saint-Petersburg with one service
- Guaranteed safety of cargo
- Reduce wait time of departure at ports of the Far East
- Transportation from any terminal of the Far East

## Stages of transportation

### Loading containers in gondola cars



Vladivostok

transportation →

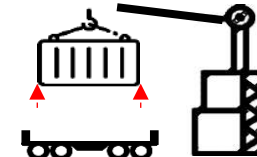
### Change of rolling stock



Novosibirsk

transportation →

### Unloading of containers



Moscow region | Yekaterinburg | Saint-Petersburg | Kazakhstan



# DIRECT CONTAINER TRAINS FROM CHINA



Organisation of services for cargo transportation from China to Russia by container trains through land border crossings using container equipment

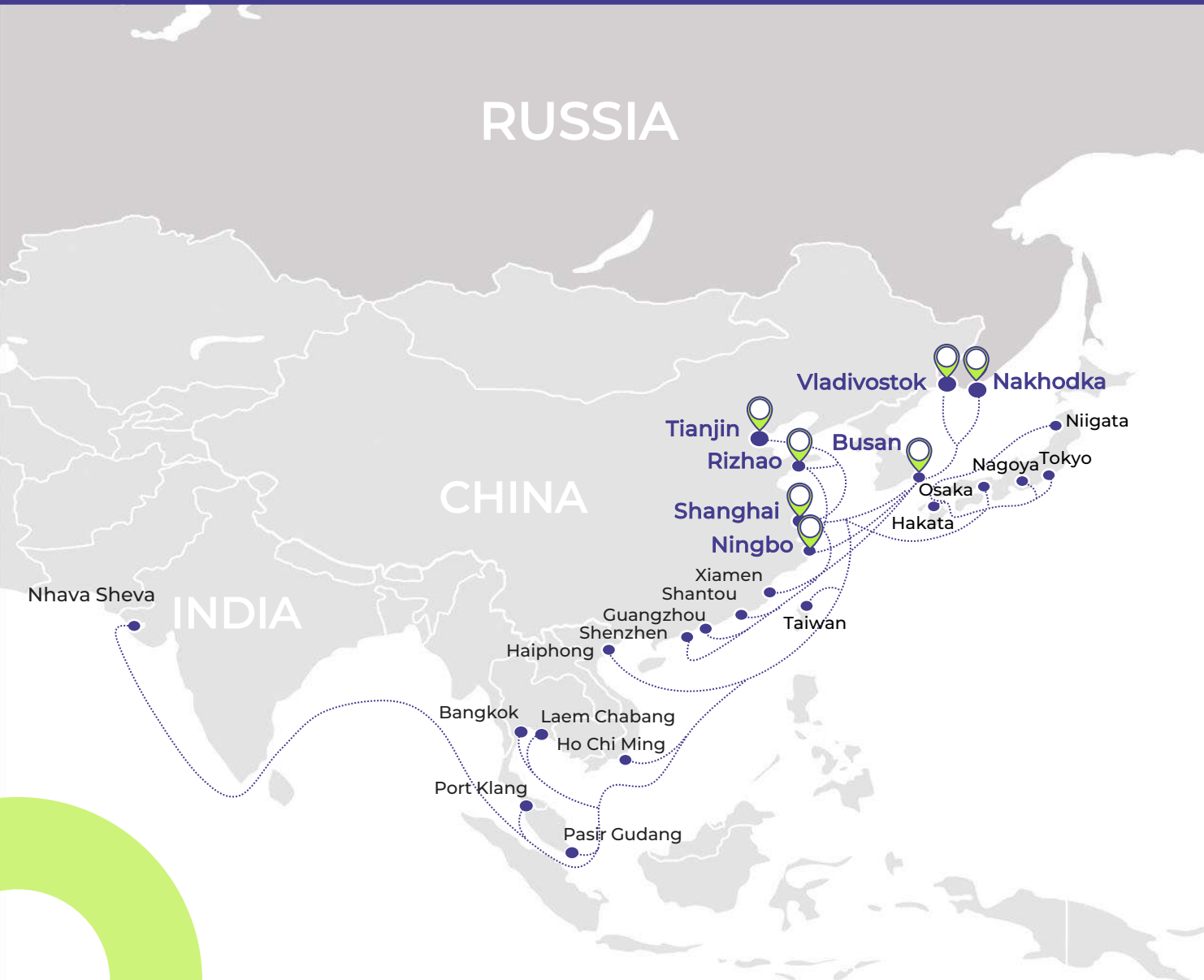


Door-to-Door or FOR delivery



Additional services (customs clearance at the station of destination, deconsolidation of cargo, insurance, etc.)

# PANDA EXPRESS LINE



Maritime integrated transportation of various cargo types



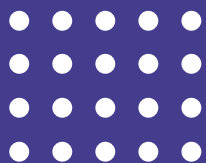
Fleet of 8 vessels with a capacity of more than 9 618 TEU



Carries out regular ship calls to the ports of Vladivostok at the terminals of Vladivostok Pervomayskiy Sea Port and Terminal Astafiev in the port of Nakhodka



Regular sea services include the Chinese ports of Shanghai, Ningbo, Rizhao, Tianjin and the South Korean port of Busan



**THANK YOU!**

LLC «LOGOPER», Moscow



[sale@logoper.ru](mailto:sale@logoper.ru)



+ 7 495 870 42 11

