



Group of companies presentation

New service to new infrastructure

About the company



> 460 000 TEU

Cargo volume in 2025



4 500 trains

Dispatched in 2025



> 18 years

In logistics



10%

Share of LOGOPER (by rail)

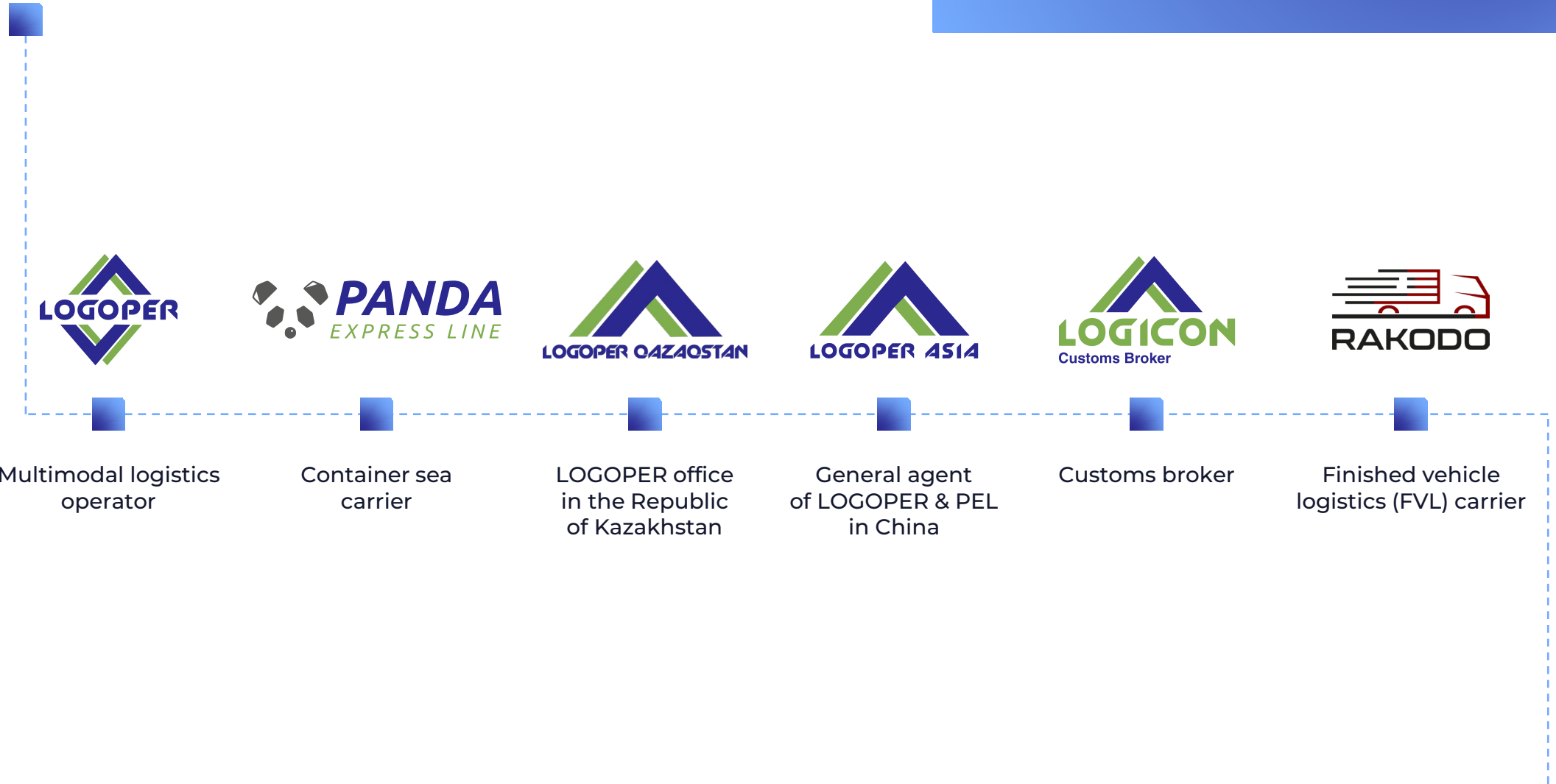


82,9%

LOGOPER's CAGR in 2022-2025



Logistics division



Terminal network



45 ha
250 000 TEU/year



120 ha
1 500 000 TEU/year



100 ha
600 000 TEU/year

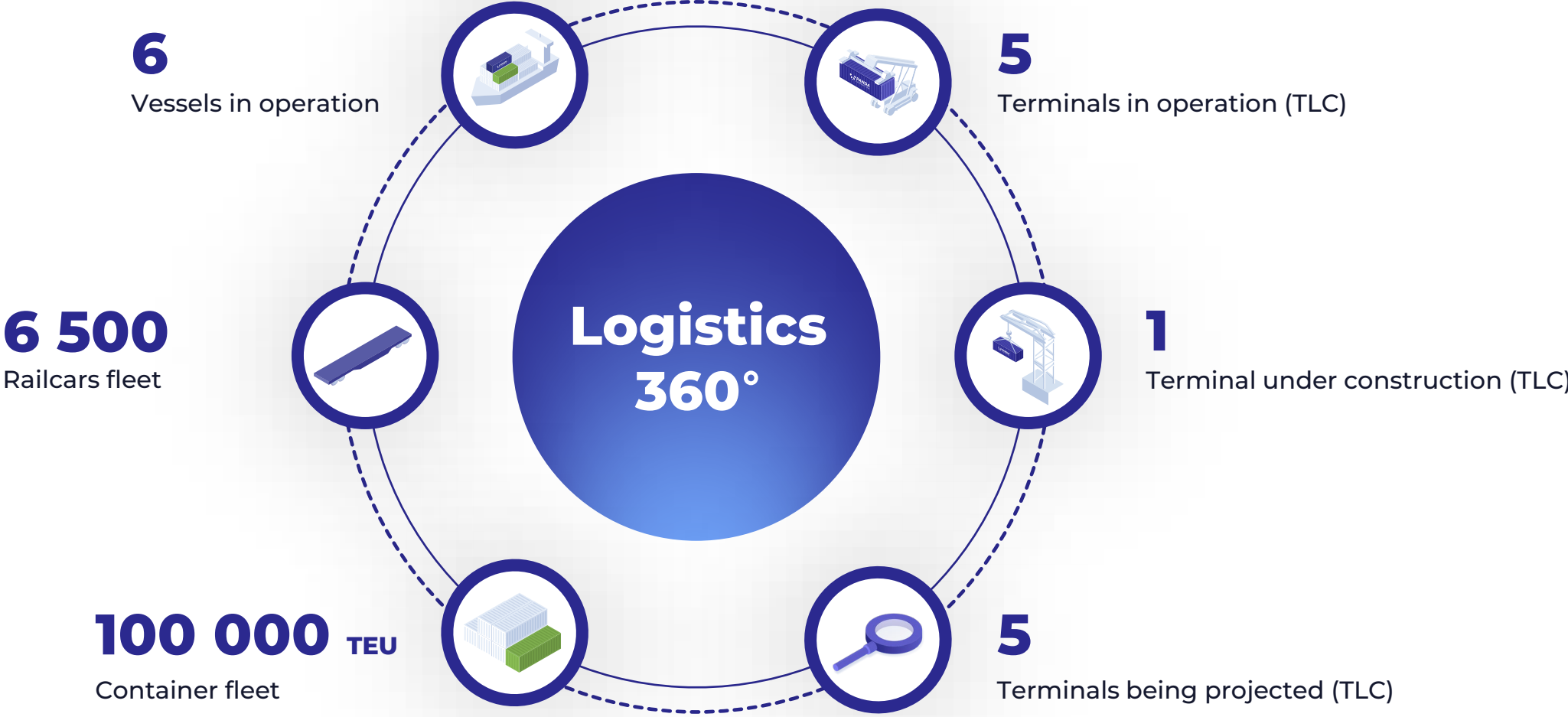


177 ha
1 000 000 TEU/year



456 ha
1 000 000 TEU/year

Group assets



Main routes geography



Multimodal transportation in export and import directions



Cross-border land transportation



Delivery to terminal or door-to-door delivery



Ancillary services
(customs clearance, vehicle unstuffing,
cargo insurance, etc.)



Domestic transportation



REGULAR SCHEDULED BLOCK TRAINS

From Moscow (TLC Elektrougli):

- to Yekaterinburg – 2 trains per week
- to Novosibirsk – 7 trains per week
- to Omsk – 2 trains per week
- to Krasnoyarsk – 4 trains per week
- to Irkutsk – 4 trains per week
- to the Far East – 5 trains per week

From Vladivostok (Uglovaya station)

- to Yekaterinburg / Moscow – 3 – 5 trains per week

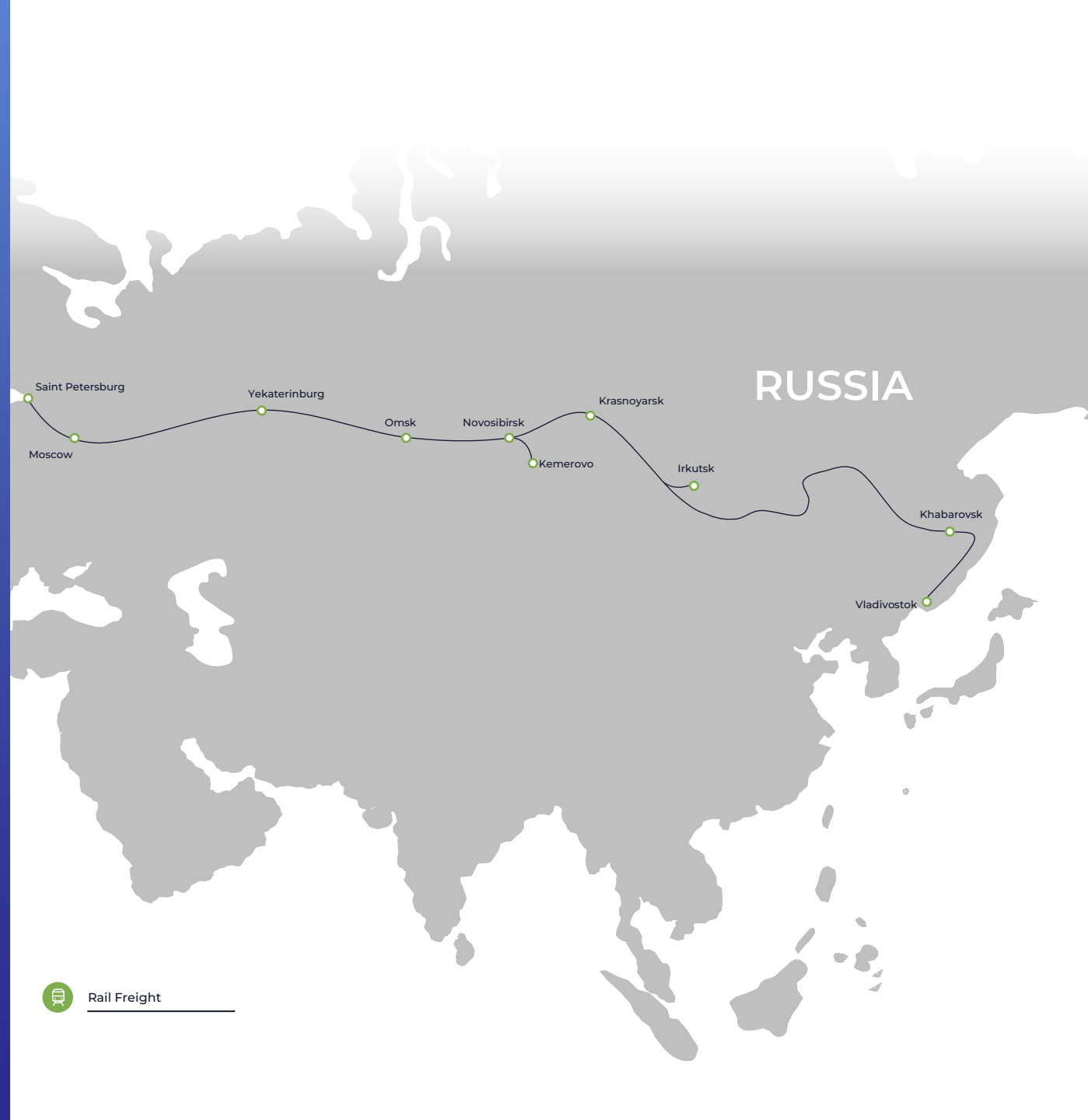
Artyom-Primorsky-1 station (TLC Artyom)

- to Moscow – 10 trains per week
- to Yekaterinburg – 1 train per week
- to Novosibirsk – 1 train per week



MARKET SHARE BY AREA

- 39% Moscow – Yekaterinburg
- 25% Moscow – Novosibirsk
- 41% Moscow – Omsk
- 26% Moscow – Krasnoyarsk
- 30% Moscow – Irkutsk
- 20% Moscow – Vladivostok



Export transportation



OWN CONTAINER TRAINS

From

- Moscow and the Central Federal District
- Ural region (Yekaterinburg)
- Western Siberia (Novosibirsk)
- Krasnoyarsk region
- Eastern Siberia

Through

- Far Eastern ports (Vladivostok/Nakhodka)
- Land cross-borders (Zabaikalsk, Mongolia, Kazakhstan and Grodekovo)



TERMINAL SERVICES

- Moscow
- Yekaterinburg
- Novosibirsk
- Vladivostok



Direct container trains from China



Organization of container transportation from China to Russia via land borders



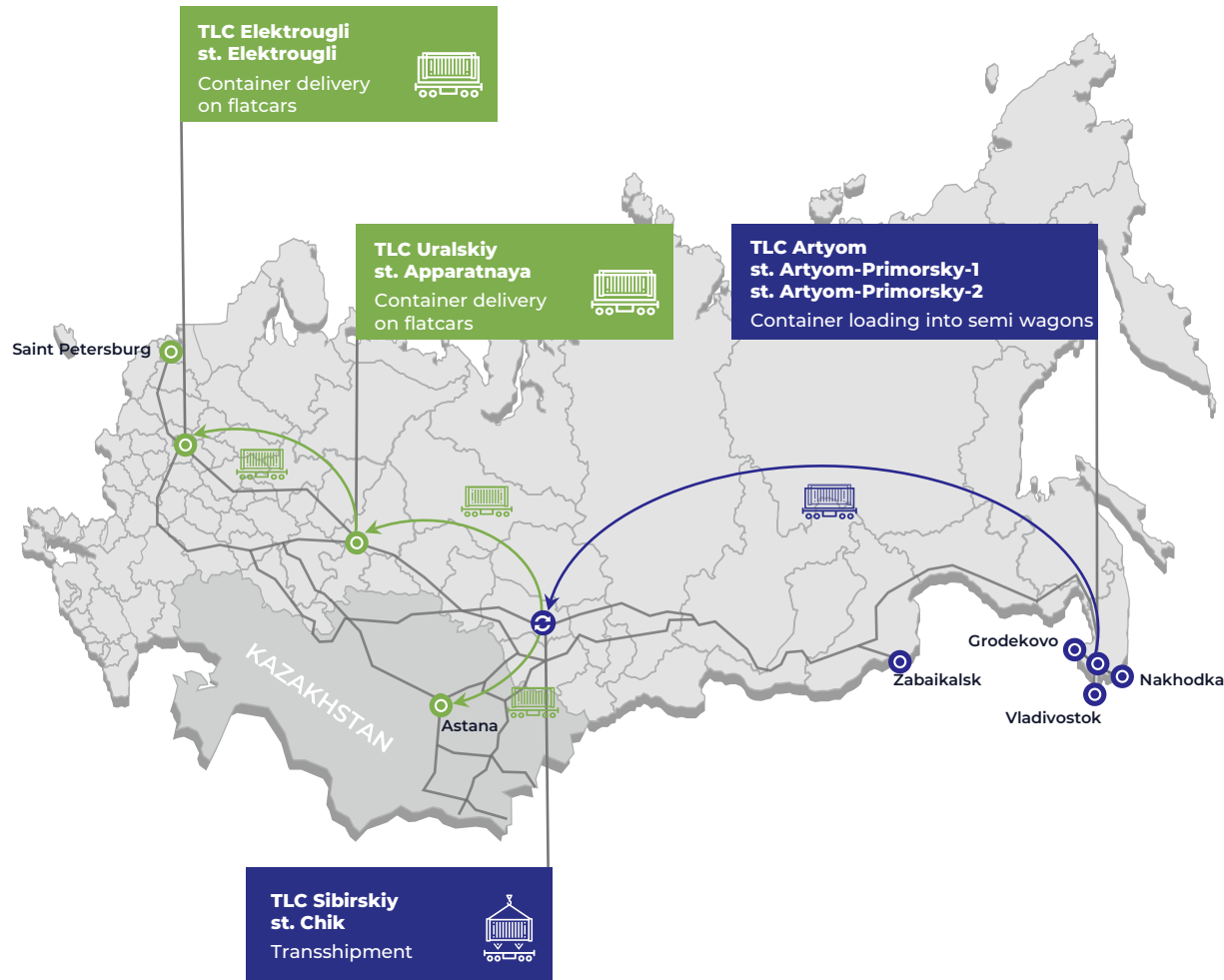
End-to-end delivery (first and last mile)



Cargo arrival in Moscow, Saint Petersburg, Ekaterinburg and Novosibirsk



Container dispatch in semi wagons



Container loading into semi wagons



Vladivostok, Nakhodka, TLC Artyom, Grodekovo and Zabaikalsk land borders

Transshipment



TLC Sibirskiy

Container delivery on flatcars



To regions of Russia and the Republic of Kazakhstan

Effects



Increasing freight volumes on railway sections with limited capacity of the Trans-Siberian Railway



Balancing export and import cargo flows in the Far East region



Minimizing empty runs (deadhead mileage) of semi wagons when returning them for coal loading



Reducing transit time from Far Eastern ports

PANDA EXPRESS LINE



Sea comprehensive transportation of various types of cargo



Fleet of 6 vessels



The company provides sea container freight transportation services between Russia (discharge terminals: Vladivostok Commercial Sea Port Pervomaysky, Vrangel Terminal, Pacific Logistics Container Terminal) and Southeast Asian countries



Regular shipping routes include the Chinese ports of Shanghai, Tianjin, Rizhao, Ningbo, Xiamen, Nansha, Bangkok, Laem Chabang, Ho Chi Minh, as well as the ports of India





up to **300**

Containers with vehicles
unstuffed per day

up to **20 000**

Vehicle parking
spaces

300 units

Fleet of car carriers
in operation

Finished vehicle logistics (FVL) using the services of the group of companies

RAKODO offers car transportation services focusing
on a personalized approach to each client



Special tariff for vehicle processing
and storage when ordering the full range
of services



Largest container terminals in Moscow,
Yekaterinburg, and Novosibirsk
with a specialized area for vehicle storage

TLC Network

FinInvest Group of companies – the largest private investor in the development of modern TLC in the Russian Federation

■ Existing TLC
 ■ TLC under construction
 TLC in the design stage



10

Multimodal TLC of the backbone network in the Russian Federation



1

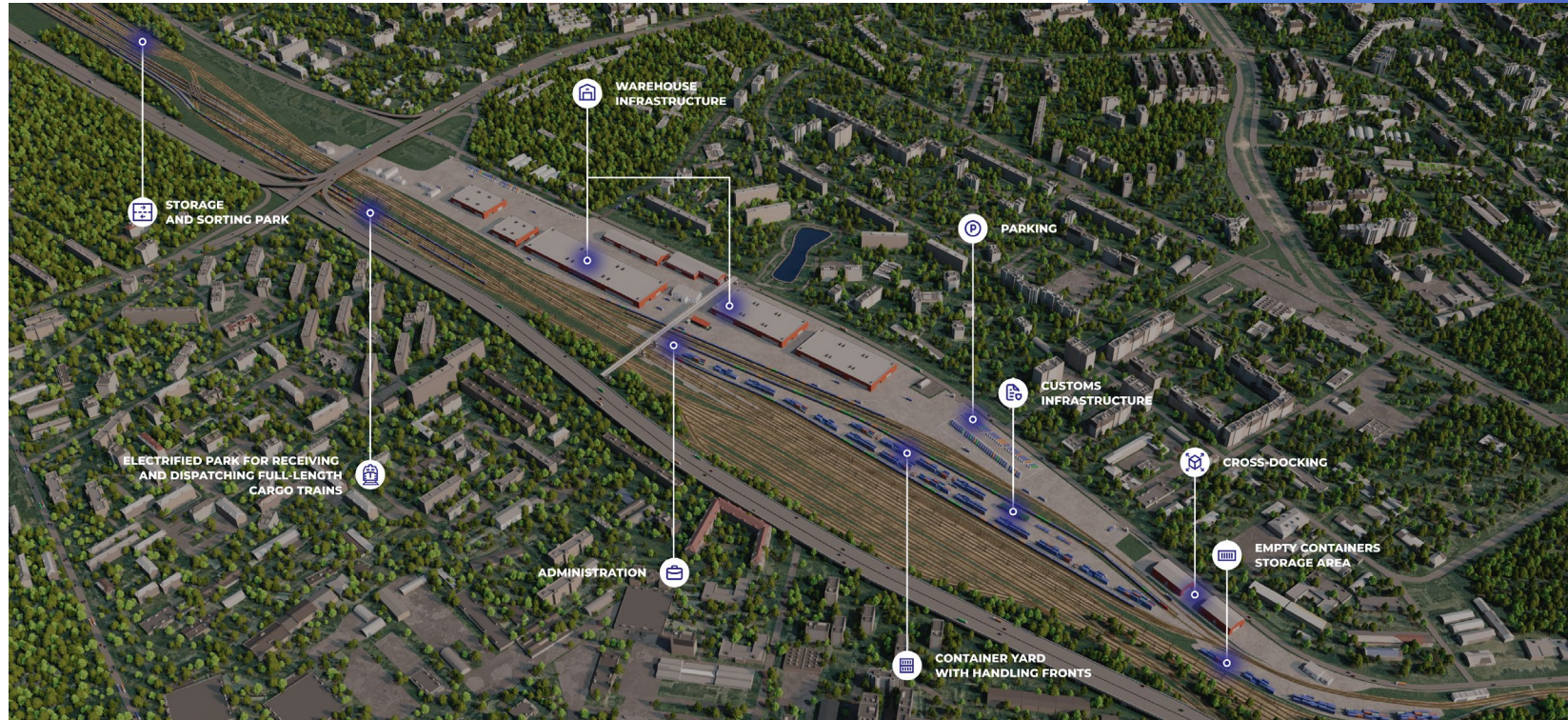
International project to establish a TLC in the Republic of Kazakhstan



6,15 mln TEU/year

Total design capacity of TLC

TLC Khovrino



250 000

Capacity, TEU/year

5 000

Container yard capacity, TEU

3

Quantity of handling fronts

6

Quantity of railway lines in the storage and sorting park

45

Area of TLC territory, ha

100 000

Total warehousing area, m²

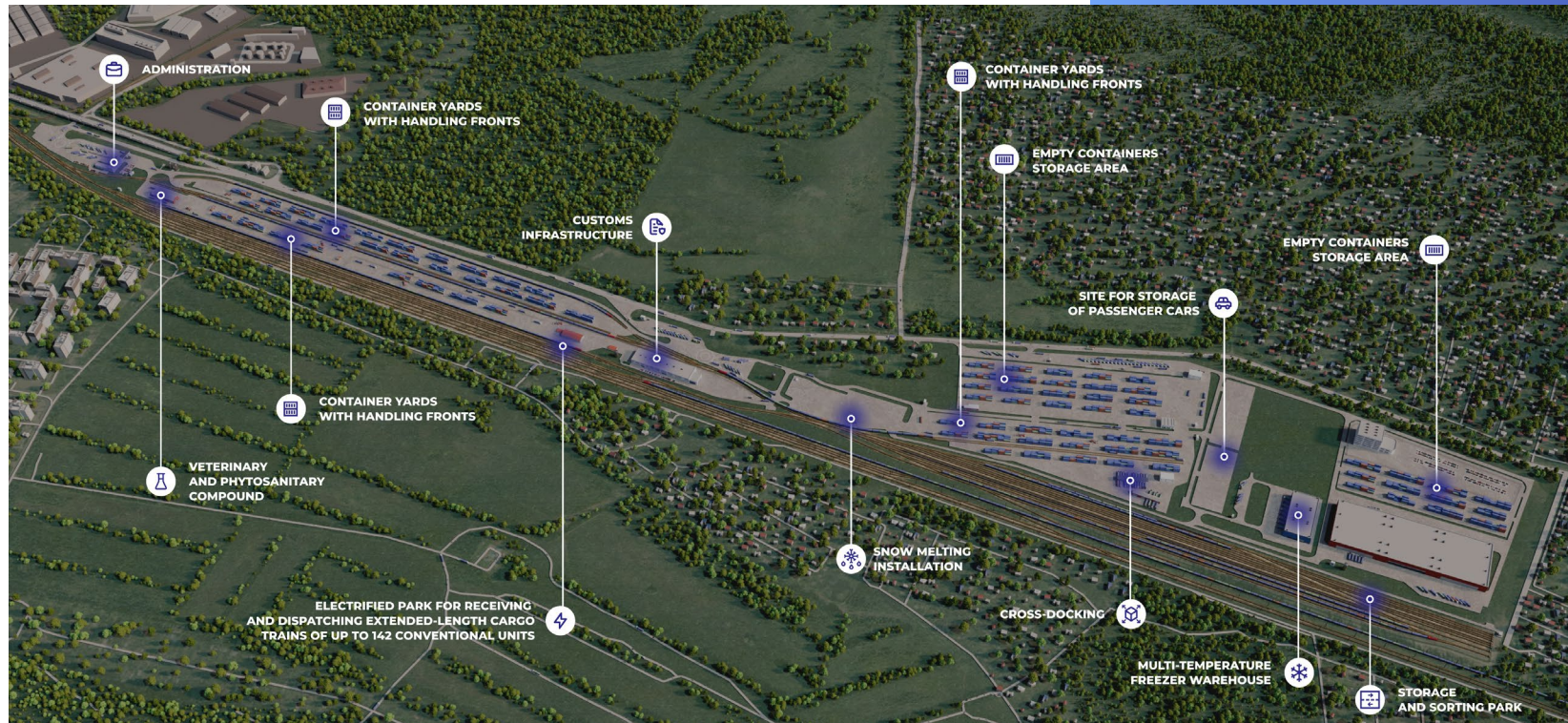
6

Quantity of receiving and dispatching railway lines

2014

Start operation

TLC Elektrougli



1 500 000

Capacity, TEU/year

55 000

Container yard capacity,
TEU

8

Quantity of handling
fronts

21

Quantity of railway lines
in the storage and sorting park

120

Area of TLC territory,
ha

400 000

Total warehousing area,
m²

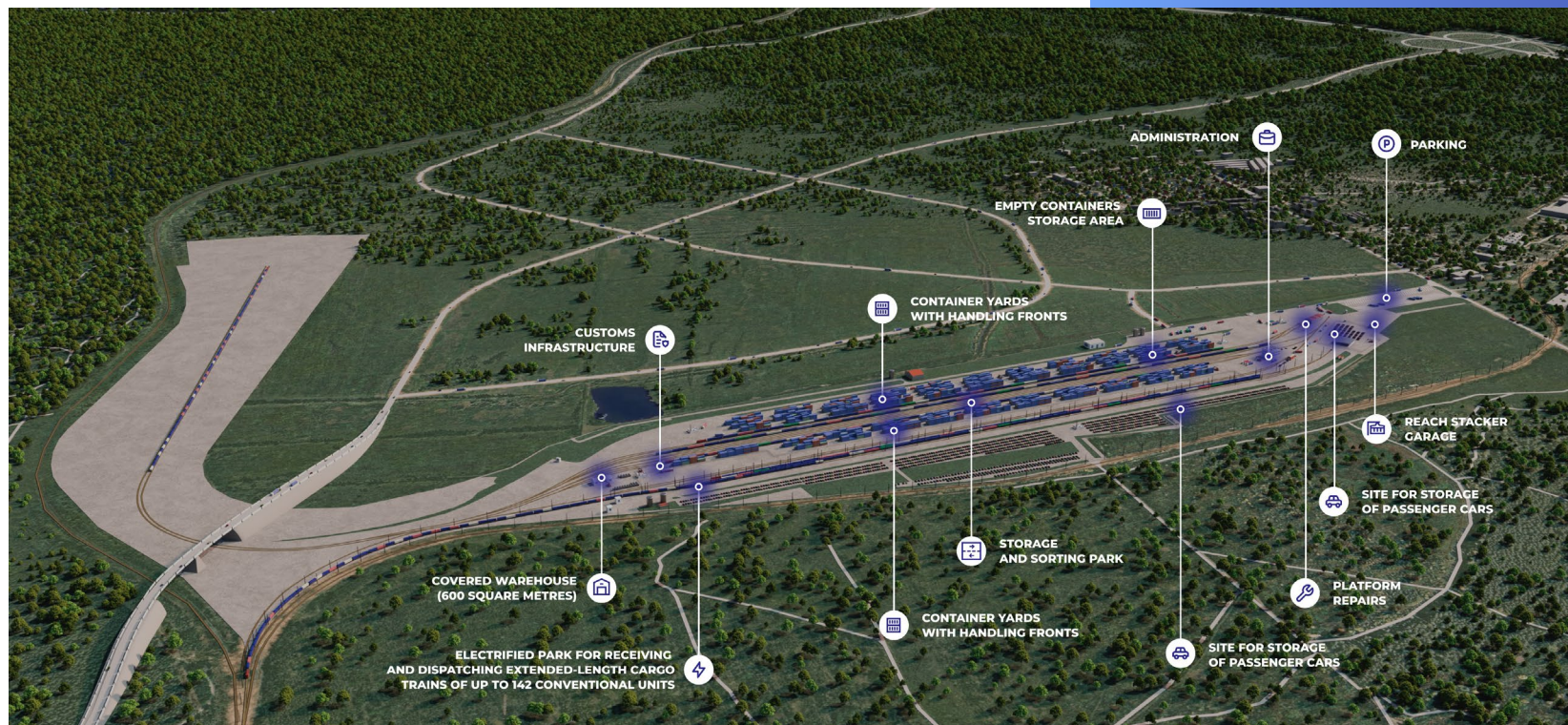
5

Quantity of receiving
and dispatching railway lines

2018

Start operation

TLC Uralskiy



600 000

Capacity, TEU/year

20 000

Container yard capacity,
TEU

4

Quantity of handling
fronts

12

Quantity of railway lines
in the storage and sorting park

100

Area of TLC territory,
ha

100 000

Total warehousing area,
m²

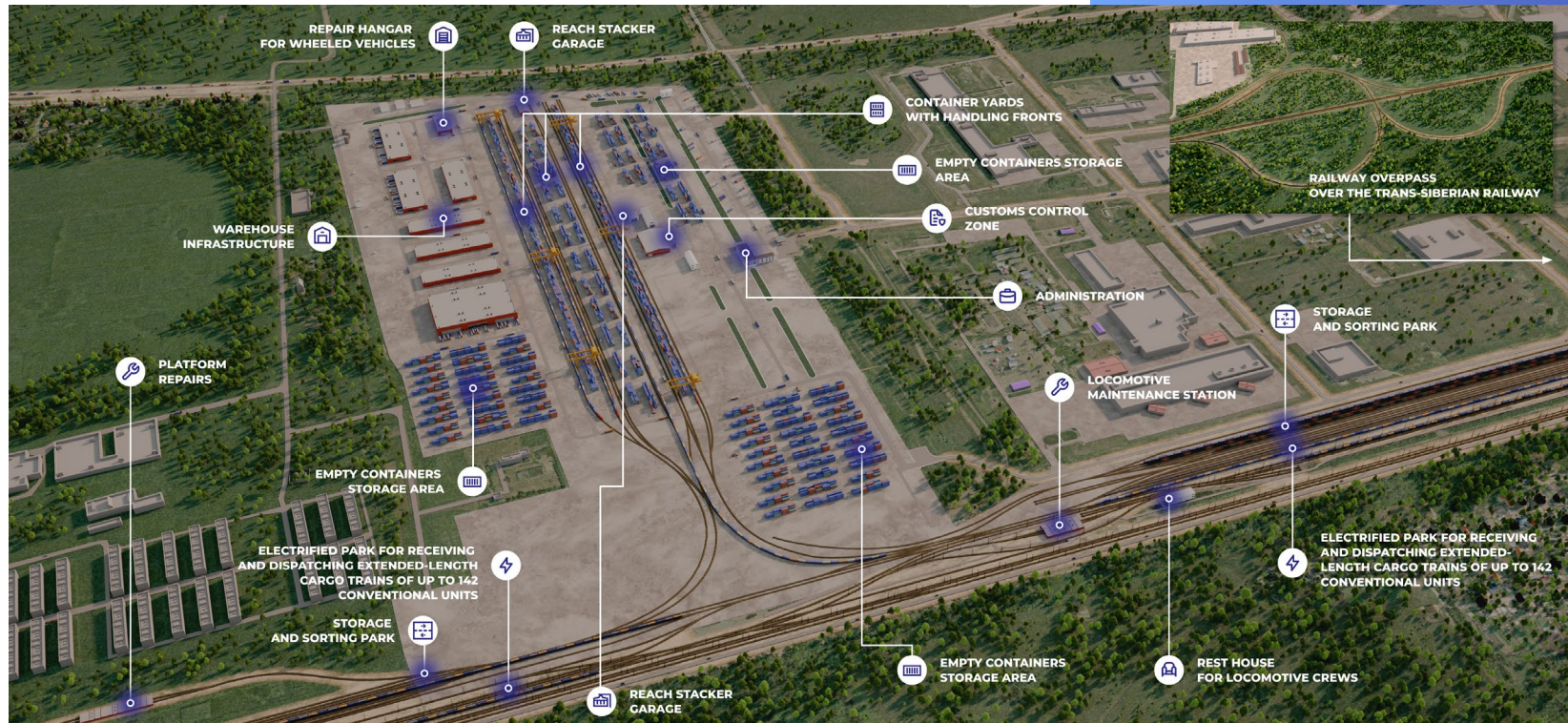
4

Quantity of receiving
and dispatching railway lines

2022

Start operation

TLC Sibirskiy



1 000 000

Capacity, TEU/year

35 000

Container yard capacity, TEU

11

Quantity of handling fronts

28

Quantity of railway lines in the storage and sorting park

177

Area of TLC territory, ha

200 000

Total warehousing area, m²

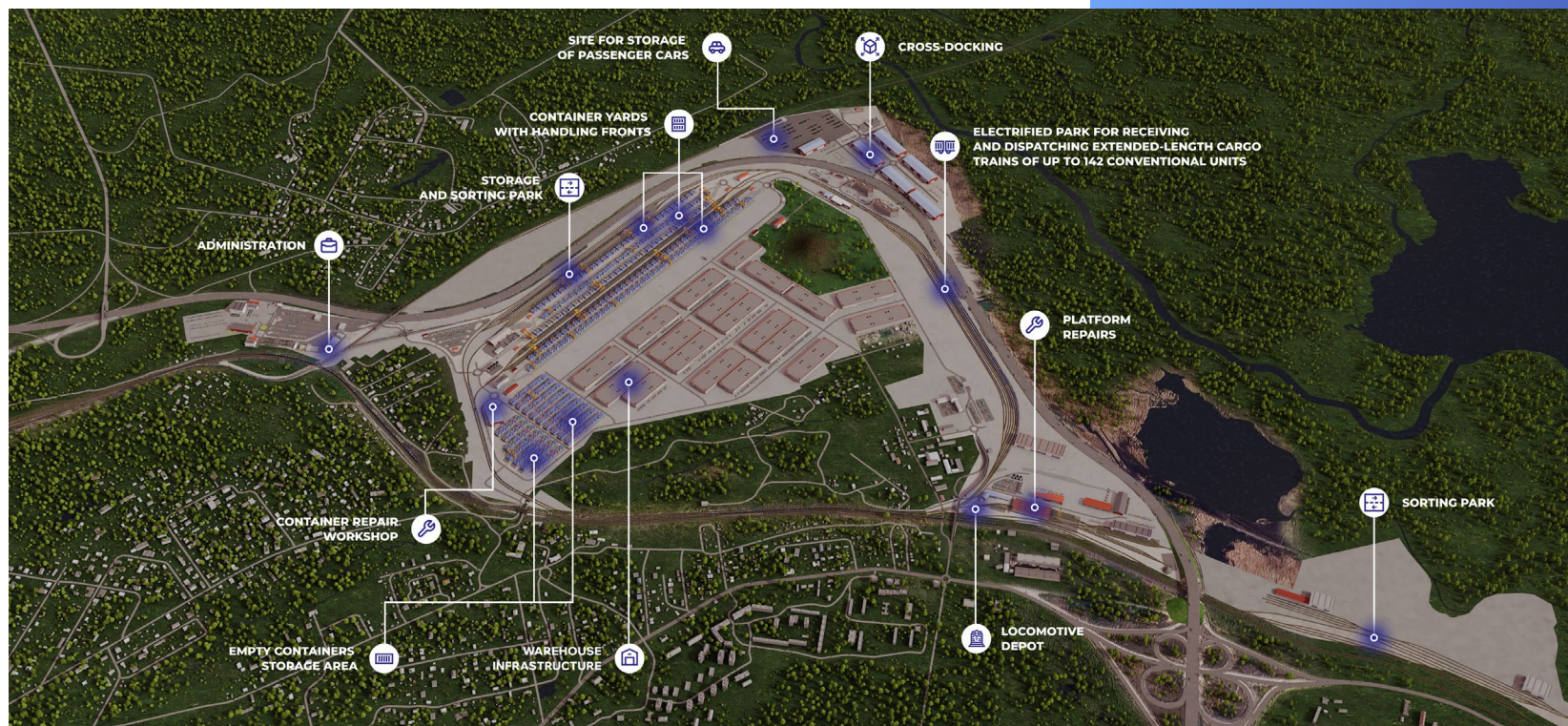
8

Quantity of receiving and dispatching railway lines

2023

Start operation

TLC Artyom



1 000 000

Capacity, TEU/year

60 000

Container yard capacity,
TEU

12

Quantity of handling
fronts

16

Quantity of railway lines
in the storage and sorting park

456

Area of TLC territory,
ha

200 000

Total warehousing area,
m²

8

Quantity of receiving
and dispatching railway lines

2025

Start operation

LOGOPER Personal Account

Optimize your work with **LOGOPER** using your personal account: complete information about containers, online access to documents, information on invoices, payments, and outstanding balances

Sign In



Sign Up



View all your containers and detailed information about them, including current location & status



View and download shipping documents, contracts, financial documents, and closing documents



View the status of invoice payments and outstanding balance



Send requests to link payments with invoices



View contacts of managers and other LOGOPER departments



Request instructions for the return of empty containers and submit requests for quotes



Thank You!



+7 495 870-42-11



sale@logoper.ru

